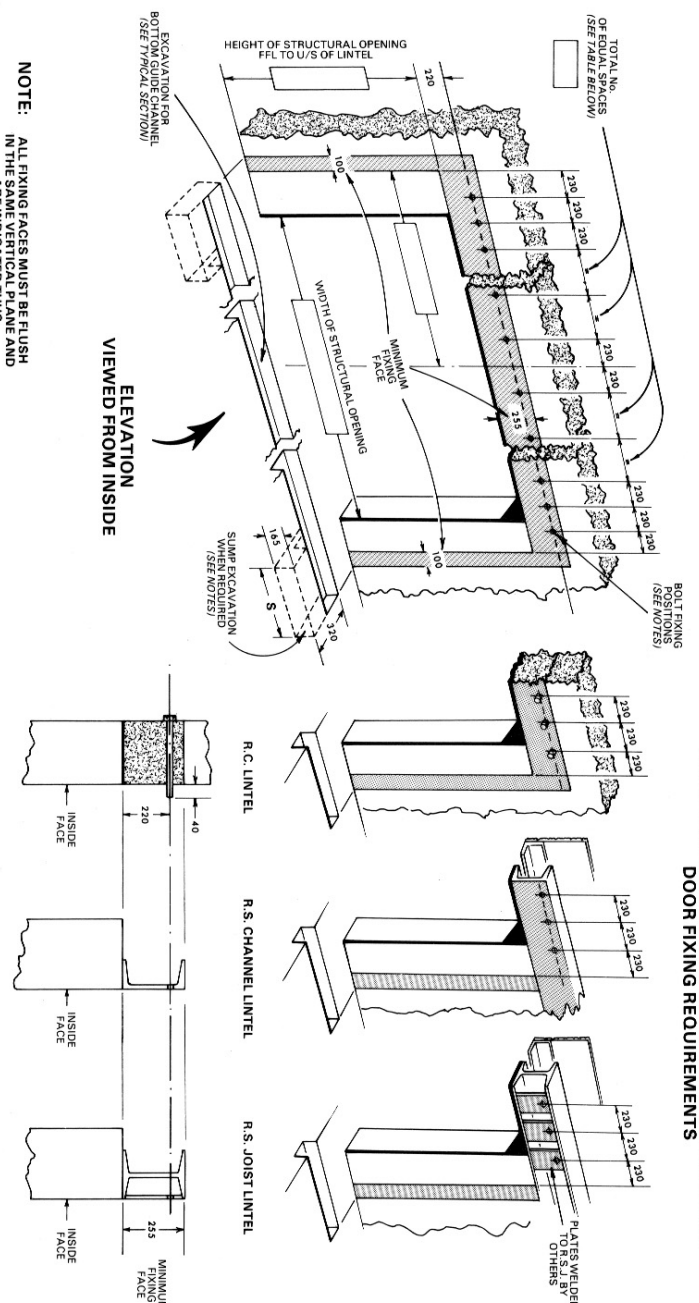
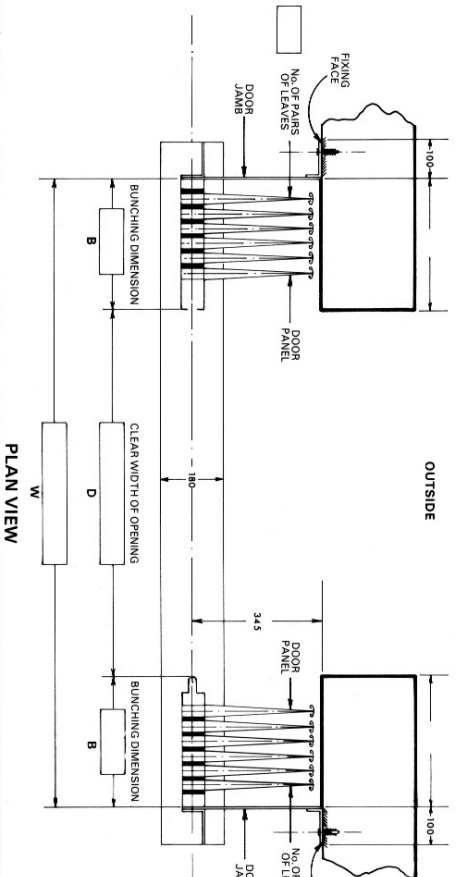


**ALTERNATIVE CONSTRUCTIONS OF OPENINGS TO SUIT  
DOOR FIXING REQUIREMENTS**



**NOTE:** ALL FIXING FACES MUST BE FLUSH IN THE SAME VERTICAL PLANE AND ARE INDICATED THUS



**IMPORTANT NOTES:**

All dimensions shown in millimetres.

Door panels, track, track fixing brackets, door soffit, door jambs and bottom guide channel: BY WID.

All other materials and work indicated must be provided by others. **ALL FIXING FACES MUST BE FLUSH AND IN THE SAME VERTICAL PLANE.**

The lintel must be suitably tied into structure to resist the over-turning moment and of adequate size to ensure the top track does not deflect more than 13 mm under a moving load of 35.7 kpa/m<sup>2</sup> of door area in the direction and position of the arrow shown in the typical section.

When the door is fixed to a concrete lintel 12 mm dia. cast-in rag or through bolts must be provided. When fixed to steel section lintels 14 mm dia. holes must be drilled.

Should the lintel construction be such that fixings are inaccessible, bolts must be welded in to give a minimum thread projection of 40 mm from the fixing face.

Cast in, through and welded-in bolts to be supplied and fixed in position by others. All other fixings by WID.

When other than steelwork is used, the area of the vertical fixing faces for the full height must be constructed of suitable material for rawl bolt fixing of the door jambs.

When sumps are ordered, extra excavation is required at both ends of the bottom guide channel excavation 200 mm wide x 165 mm deep. The length of the excavation 'S' is determined by the number of pairs of leaves provided, up to and including:- 8 pairs 'S' = 710 mm, 9 to 13 pairs 'S' = 915 mm.

**INSTALLATION DRAWING FOR WID SLIDING SHUTTER (TYPE HG)  
ARRANGEMENT 1 BI-PARTING MANUALLY OPERATED**

HG BH PART

TOTAL NUMBER OF EQUAL SPACERS FOR BOLT FIXINGS RELATED TO DIMENSION											W
2610	3790	4970	6150	7335	8515	9695	10875	12060	13240	14420	15600
2	4	6	8	8	10	12	12	14	14	16	18
2	4	4	6	6	8	10	12	12	14	14	16
2	2	2	4	4	6	6	8	10	10	12	14
2	2	2	4	4	6	6	8	8	10	10	12

DRAWING ISSUE No. \_\_\_\_\_ ARCHITECT/CONTRACTOR \_\_\_\_\_

LOCATION \_\_\_\_\_

FOR EMERGENCY REPAIR OR MAINTENANCE CALL:  
(01353) 717308 / 412851 Fax: (01353) 717613  
www.wid.co.uk  
Activity Road, Luton Trading Estate, Yeovil, Somerset BA22 8RP

DRAWN BY \_\_\_\_\_ DATE \_\_\_\_\_

SCALE \_\_\_\_\_

ORDER No. \_\_\_\_\_ DRAWING No. **HG1 BPM**

11/74