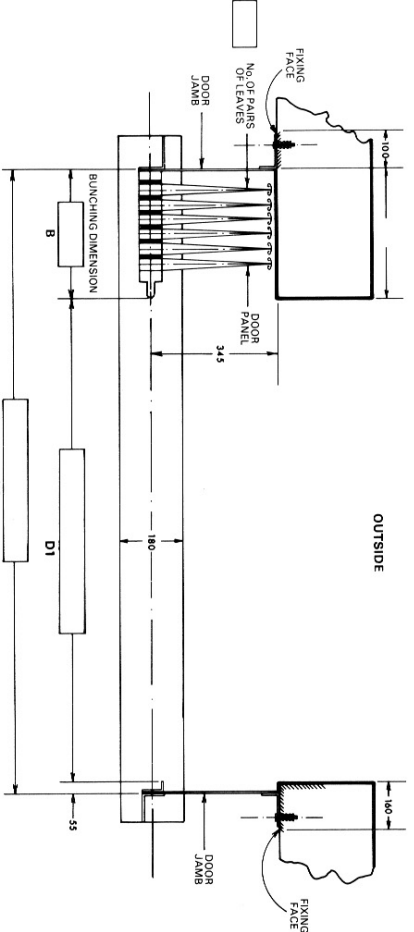
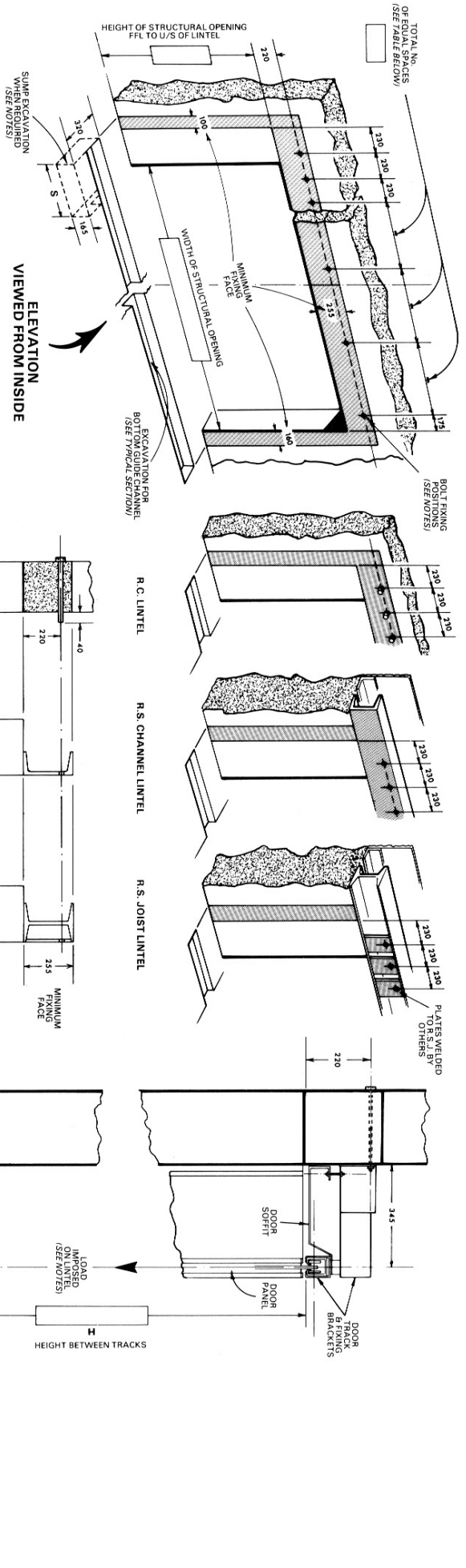


**ALTERNATIVE CONSTRUCTIONS OF OPENINGS TO SUIT
DOOR FIXING REQUIREMENTS**



IMPORTANT NOTES:

All dimensions shown in millimetres.

DOOR PANELS, TRACK, TRACK FIXING BRACKETS, DOOR SOFFIT, DOOR JAMBS AND BOTTOM GUIDE CHANNEL BY WID.

DOOR STRUCTURE
All other materials and work indicated must be provided by others. ALL FIXING FACES MUST BE FLUSH AND IN THE SAME VERTICAL PLANE. The lintel must be suitably tied into structure to resist the over-turning moment and of adequate size to ensure the top track does not deflect more than 13 mm under a moving load of 36.7 kgs/m² of door area in the direction and position of the arrow shown in the typical section.

BOLT FIXINGS
When the door is fixed to a concrete lintel 12 mm dia. cast-in rag or through bolts must be provided. When fixed to steel section lintels 14 mm dia. holes must be drilled.

Should the lintel construction be such that fixings are inaccessible, bolts must be welded in to give a minimum thread projection of 40 mm from the fixing face.

Cast in, through and welded in bolts to be supplied and fixed in position by others. All other fixings by WID.

DOOR JAMB FIXINGS
When other than steelwork is used, the area of the vertical fixing faces for the full height must be constructed of suitable material for raw bolt fixing of the door jambs.

SUMP EXCAVATION
When sumps are ordered extra excavation is required at the bunching end of the bottom guide channel excavation 320 mm wide x 165 mm deep. The length of the excavation 'S' is determined by the number of pairs of leaves provided, up to and including:
8 Pairs 'S' = 70 mm
9 to 12 Pairs 'S' = 815 mm.

**INSTALLATION DRAWING FOR WID SLIDING SHUTTER (TYPE HG)
ARRANGEMENT 1 LEFT HAND MANUALLY OPERATED**

HG SINGLE

		TOTAL NUMBER OF EQUAL SPACES RELATED TO DIMENSION																					
		W1																					
A	H	1	2	3	4	5	6	7	8	9	10	11	12	13	14	15	16	17	18	19	20	21	22
1	1	1	1	1	1	1	1	1	1	1	1	1	1	1	1	1	1	1	1	1	1	1	1
2	1	1	1	1	1	1	1	1	1	1	1	1	1	1	1	1	1	1	1	1	1	1	1
3	1	1	1	1	1	1	1	1	1	1	1	1	1	1	1	1	1	1	1	1	1	1	1
4	1	1	1	1	1	1	1	1	1	1	1	1	1	1	1	1	1	1	1	1	1	1	1
5	1	1	1	1	1	1	1	1	1	1	1	1	1	1	1	1	1	1	1	1	1	1	1
6	1	1	1	1	1	1	1	1	1	1	1	1	1	1	1	1	1	1	1	1	1	1	1
7	1	1	1	1	1	1	1	1	1	1	1	1	1	1	1	1	1	1	1	1	1	1	1
8	1	1	1	1	1	1	1	1	1	1	1	1	1	1	1	1	1	1	1	1	1	1	1
9	1	1	1	1	1	1	1	1	1	1	1	1	1	1	1	1	1	1	1	1	1	1	1
10	1	1	1	1	1	1	1	1	1	1	1	1	1	1	1	1	1	1	1	1	1	1	1
11	1	1	1	1	1	1	1	1	1	1	1	1	1	1	1	1	1	1	1	1	1	1	1
12	1	1	1	1	1	1	1	1	1	1	1	1	1	1	1	1	1	1	1	1	1	1	1
13	1	1	1	1	1	1	1	1	1	1	1	1	1	1	1	1	1	1	1	1	1	1	1
14	1	1	1	1	1	1	1	1	1	1	1	1	1	1	1	1	1	1	1	1	1	1	1
15	1	1	1	1	1	1	1	1	1	1	1	1	1	1	1	1	1	1	1	1	1	1	1
16	1	1	1	1	1	1	1	1	1	1	1	1	1	1	1	1	1	1	1	1	1	1	1
17	1	1	1	1	1	1	1	1	1	1	1	1	1	1	1	1	1	1	1	1	1	1	1
18	1	1	1	1	1	1	1	1	1	1	1	1	1	1	1	1	1	1	1	1	1	1	1
19	1	1	1	1	1	1	1	1	1	1	1	1	1	1	1	1	1	1	1	1	1	1	1
20	1	1	1	1	1	1	1	1	1	1	1	1	1	1	1	1	1	1	1	1	1	1	1
21	1	1	1	1	1	1	1	1	1	1	1	1	1	1	1	1	1	1	1	1	1	1	1
22	1	1	1	1	1	1	1	1	1	1	1	1	1	1	1	1	1	1	1	1	1	1	1

DRAWING ISSUE No. _____ ARCHITECT/CONTRACTOR _____

LOCATION _____

FOR EMERGENCY REPAIR OR MAINTENANCE CALL:
(01935) 473788 / 473981 Fax: 01935 479413
www.wessexindustrialdoors.com enquiries@wessexindustrialdoors.com
Ardilly Road, Lutton Trading Estate, Yeovil, Somerset BA22 8RP

DRAWN BY _____ DATE _____ SCALE _____

ORDER No. _____ DRAWING No. **HG1 LHM**