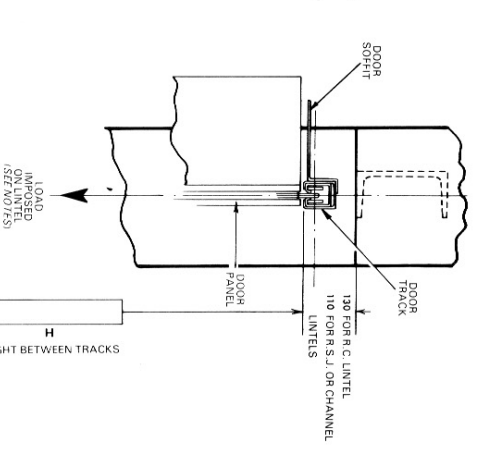
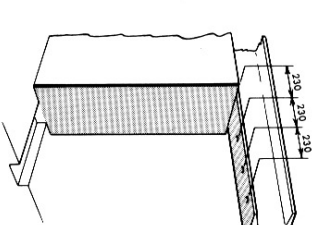
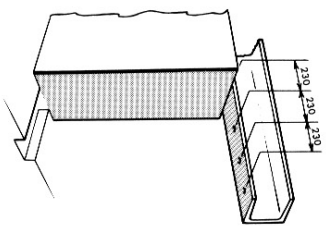
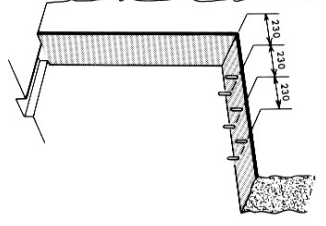
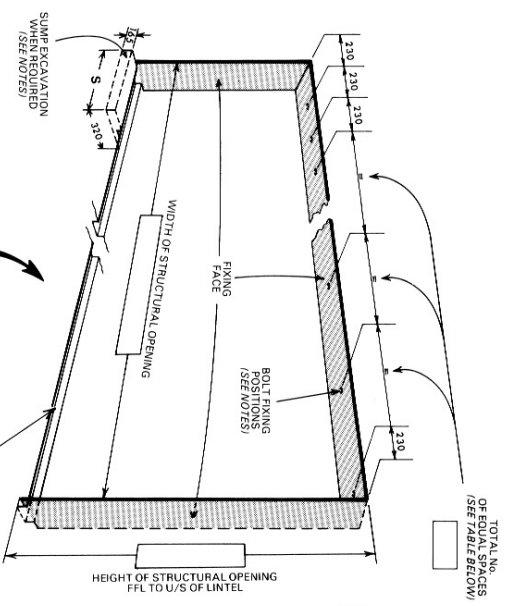
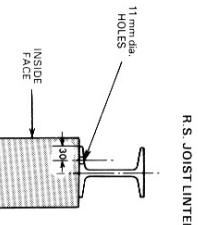
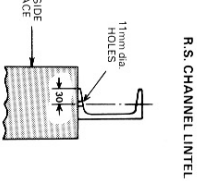
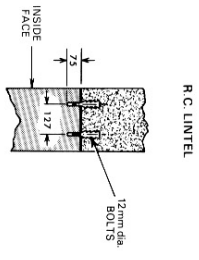


**ALTERNATIVE CONSTRUCTIONS OF OPENINGS TO SUIT  
DOOR FIXING REQUIREMENTS**



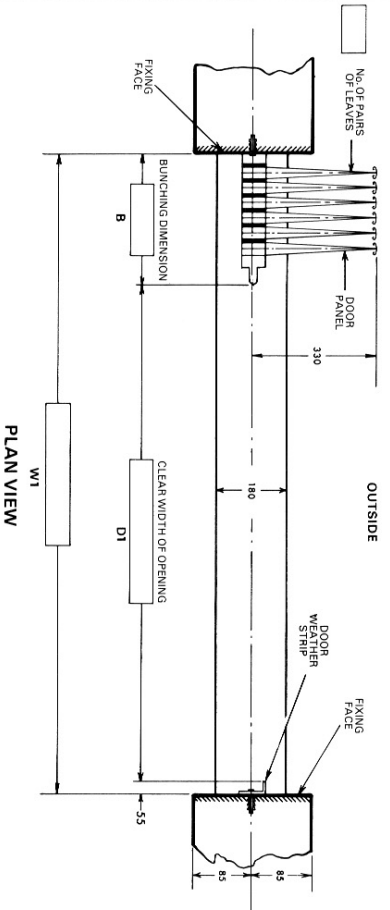
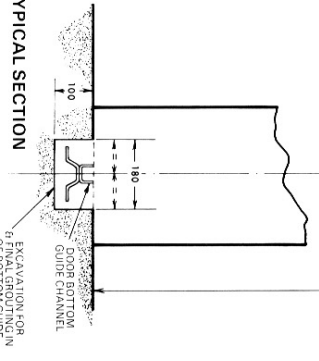
**ELEVATION VIEWED FROM INSIDE**

**NOTE:** ALL FIXING FACES MUST BE FLUSH AND ARE INDICATED THUS



**SECTIONS THROUGH LINTELS**

**TYPICAL SECTION**



TOTAL NUMBER OF EQUAL SPACES FOR BOLT FIXINGS RELATED TO DIMENSION												
HG/SINGLE	1350	1940	2530	3120	3710	4300	4890	5480	6075	6665	7255	7845
1	1	2	3	4	5	6	7	8	9	10	11	12
2	1	1	2	3	4	5	6	7	8	9	10	11
3	1	1	1	2	3	4	5	6	7	8	9	10
4	1	1	1	1	2	3	4	5	6	7	8	9
5	1	1	1	1	1	2	3	4	5	6	7	8
6	1	1	1	1	1	1	2	3	4	5	6	7
7	1	1	1	1	1	1	1	2	3	4	5	6
8	1	1	1	1	1	1	1	1	2	3	4	5
9	1	1	1	1	1	1	1	1	1	2	3	4
10	1	1	1	1	1	1	1	1	1	1	2	3
11	1	1	1	1	1	1	1	1	1	1	1	2
12	1	1	1	1	1	1	1	1	1	1	1	1

**IMPORTANT NOTES:**

**DIMENSIONS**  
All dimensions shown in millimetres.

**DOOR**  
Door panels, track, soffits, weatherstrip and bottom guide channel by WID.

**STRUCTURE**  
All other materials and work indicated must be provided by others. **ALL FIXING FACES MUST BE FLUSH.**

**BOLT FIXINGS**  
The lintel must be suitably tied into the structure to resist any over-turning moment and of adequate size to ensure the top track does not deflect more than 13 mm under a moving load of 36.7 kgs/m<sup>2</sup> of door area in the direction of the arrow shown in the typical section.

When the door is hung from a concrete lintel 12 mm dia. cast-in-rag bolts must be provided with a bolt projection of 75 mm below soffit face of lintel. When steel section lintels are used 11 mm dia. holes must be drilled.

Cast-in-rag bolts to be supplied and fixed in position by others. All other fixings by WID.

**DOOR PANELS & WEATHERSTRIP FIXINGS**  
When other than steelwork is used, the area of the vertical fixing faces for the full height must be constructed of suitable material for rawl bolt fixing of the door and weatherstrip.

**SUMP EXCAVATION**  
When sumps are ordered extra excavation is required at the bunching end of the bottom guide channel excavation 320 mm wide x 165 mm deep. The length of the excavation 'S' is determined by the number of pairs of leaves provided up to and including:-  
8 pairs 'S' = 610 mm  
9 to 13 pairs 'S' = 815 mm

**INSTALLATION DRAWING FOR WID SLIDING SHUTTER (TYPE HG)  
ARRANGEMENT 2 LEFT HAND MANUALLY OPERATED**

DRAWING ISSUE No.		ARCHITECT/CONTRACTOR	
LOCATION		FOR EMERGENCY REPAIR OR MAINTENANCE CALL: (01935) 473708 / 473851 Fax: 01935 479413 www.widessetindustrialdoors.com enquiries@widessetindustrialdoors.com Ardilly Road, Luton Trading Estate, Veroli, Somersham BK22 8PQ	
DRAWN BY	SCALE	DATE	ORDER No.
11/74			HG2 LHM